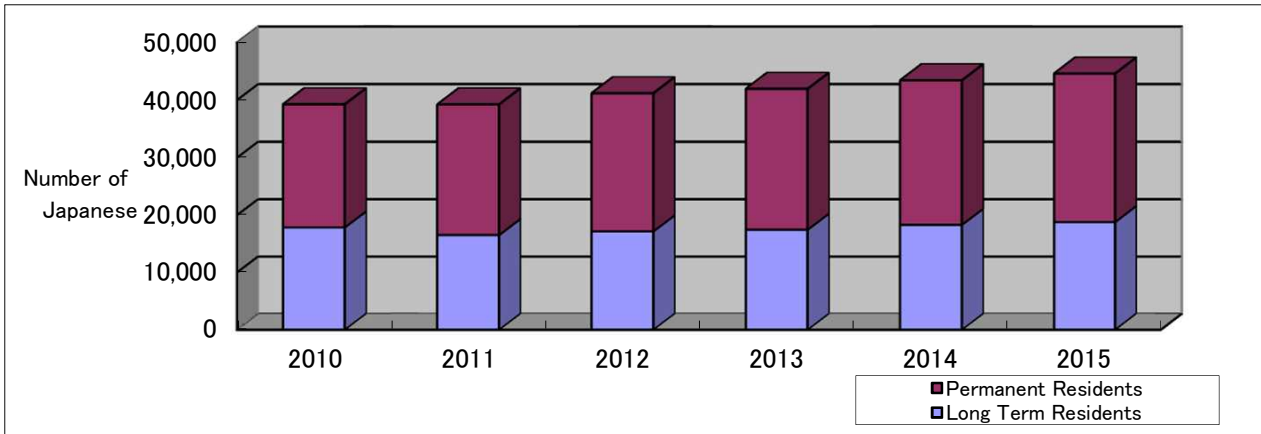


Numbers of Japanese Nationals (Northern and Central California and Nevada)

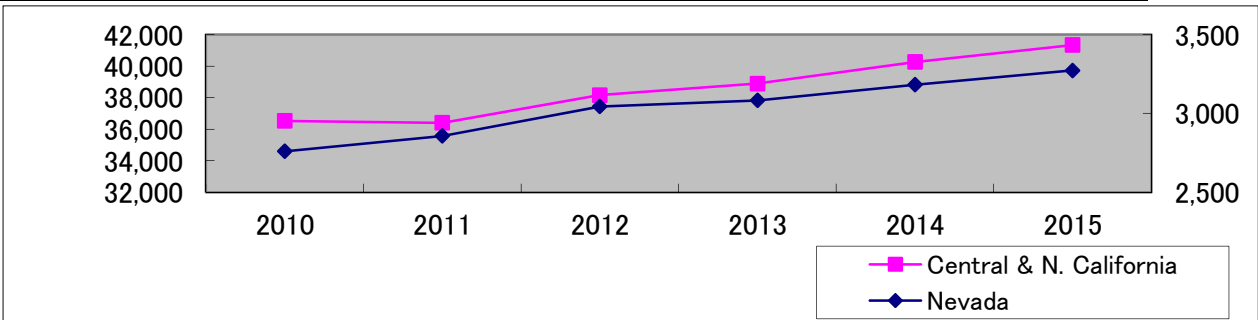
1. Total Number of Japanese Residents

	2010	2011	2012	2013	2014	2015
Long Term Residents	17,874	16,543	17,183	17,477	18,332	18,809
Permanent Residents	21,411	22,721	24,025	24,497	25,118	25,807
Total Number	39,285	39,264	41,208	41,974	43,450	44,616



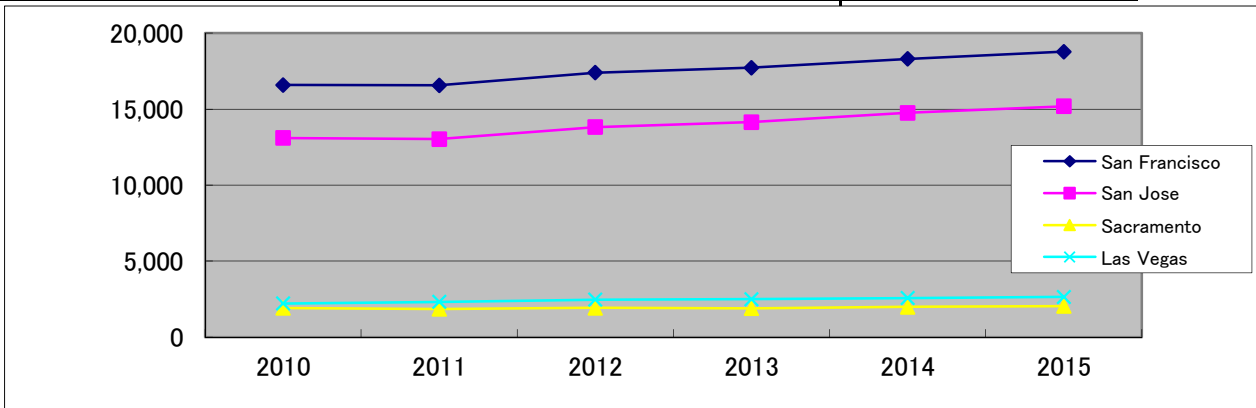
2. By State

	2010	2011	2012	2013	2014	2015
Central & N. California	36,525	36,407	38,164	38,891	40,268	41,343
Nevada	2,760	2,857	3,044	3,083	3,182	3,273



3. By City

	2010	2011	2012	2013	2014	2015
San Francisco	16,587	16,565	17,394	17,727	18,305	18,777
San Jose	13,100	13,023	13,812	14,146	14,750	15,182
Sacramento	1,915	1,852	1,920	1,896	1,988	2,037
Las Vegas	2,207	2,316	2,463	2,489	2,564	2,636



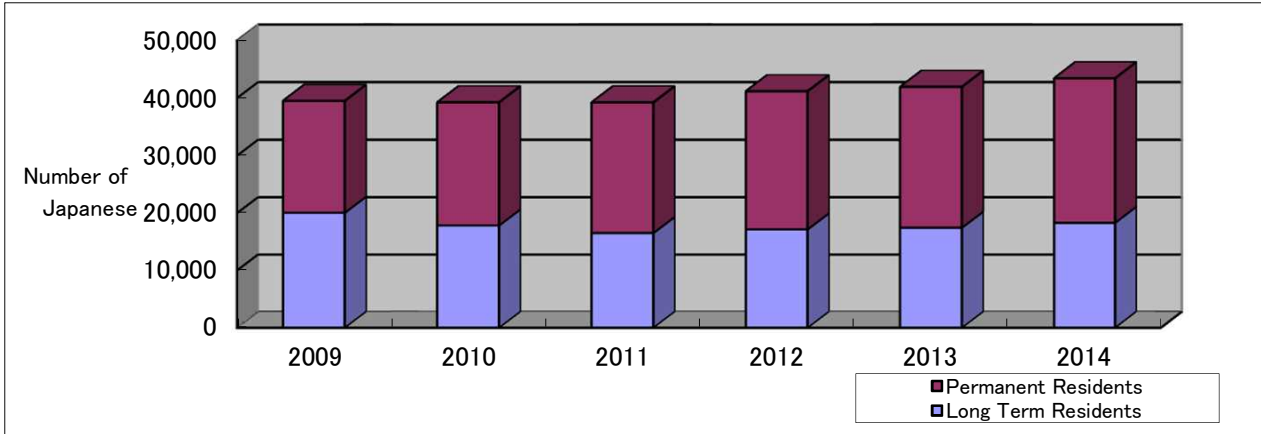
※Number of Japanese by city includes the Japanese population in the surrounding area.

※These statistics are estimated according to the number of notification of residence forms received.

Numbers of Japanese Nationals (Northern and Central California and Nevada)

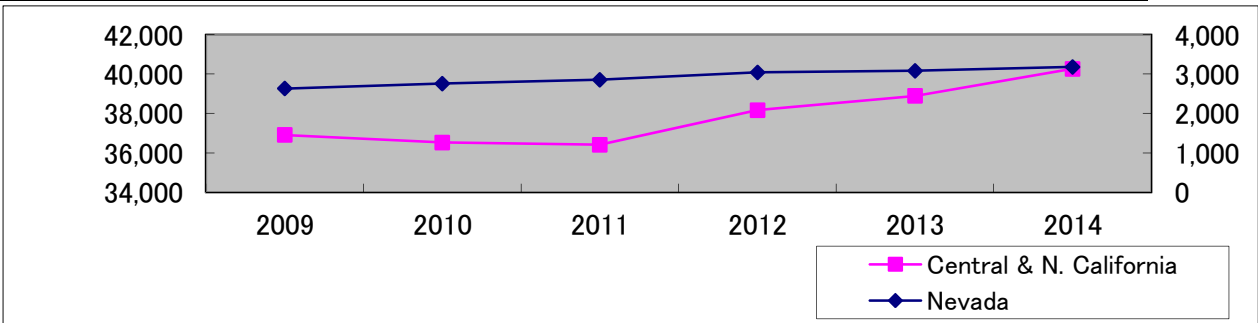
1. Total Number of Japanese Residents

	2009	2010	2011	2012	2013	2014
Long Term Residents	20,084	17,874	16,543	17,183	17,477	18,332
Permanent Residents	19,452	21,411	22,721	24,025	24,497	25,118
Total Number	39,536	39,285	39,264	41,208	41,974	43,450



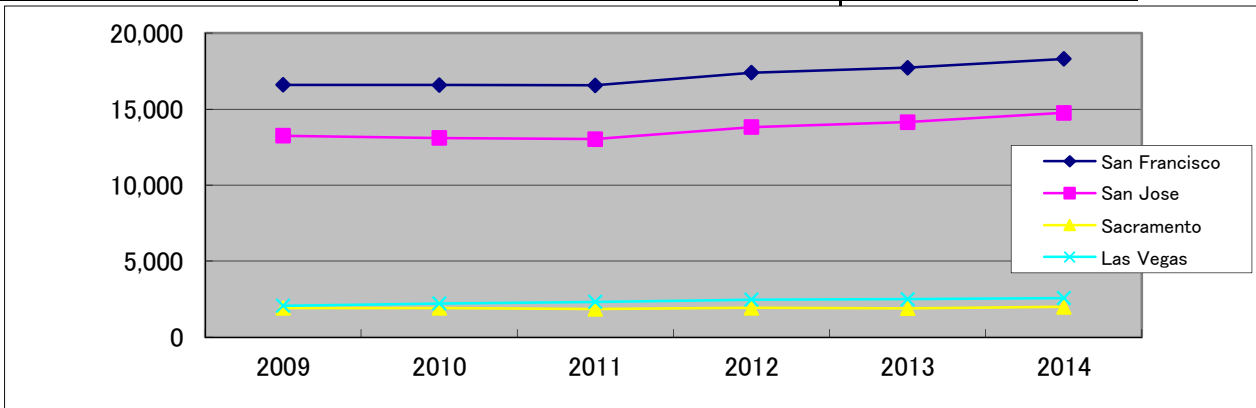
2. By State

	2009	2010	2011	2012	2013	2014
Central & N. California	36,905	36,525	36,407	38,164	38,891	40,268
Nevada	2,631	2,760	2,857	3,044	3,083	3,182



3. By City

	2009	2010	2011	2012	2013	2014
San Francisco	16,599	16,587	16,565	17,394	17,727	18,305
San Jose	13,249	13,100	13,023	13,812	14,146	14,750
Sacramento	1,916	1,915	1,852	1,920	1,896	1,988
Las Vegas	2,065	2,207	2,316	2,463	2,489	2,564



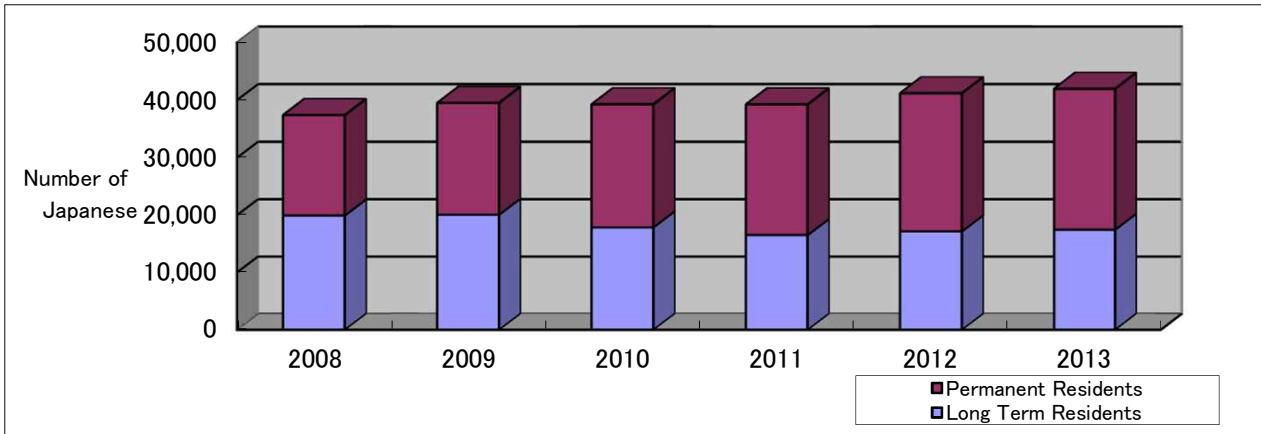
※Number of Japanese by city includes the Japanese population in the surrounding area.

※These statistics are estimated according to the number of notification of residence forms received.

Numbers of Japanese Nationals (Northern and Central California and Nevada)

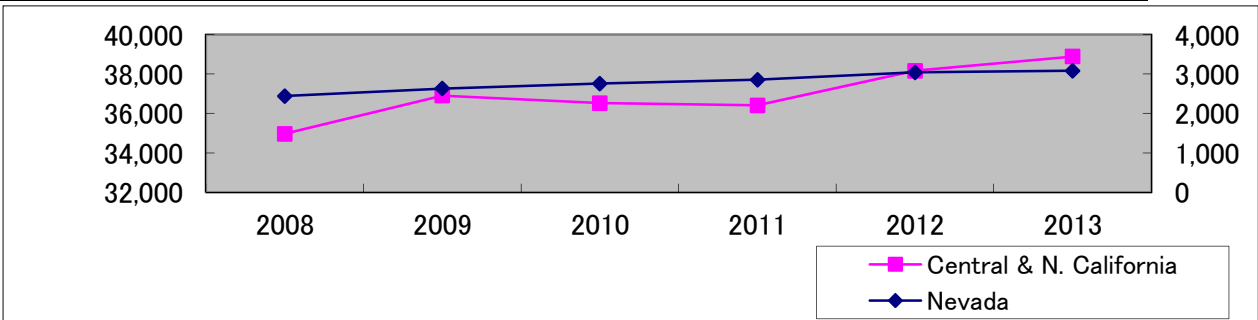
1. Total Number of Japanese Residents

	2008	2009	2010	2011	2012	2013
Long Term Residents	19,946	20,084	17,874	16,543	17,183	17,477
Permanent Residents	17,459	19,452	21,411	22,721	24,025	24,497
Total Number	37,405	39,536	39,285	39,264	41,208	41,974



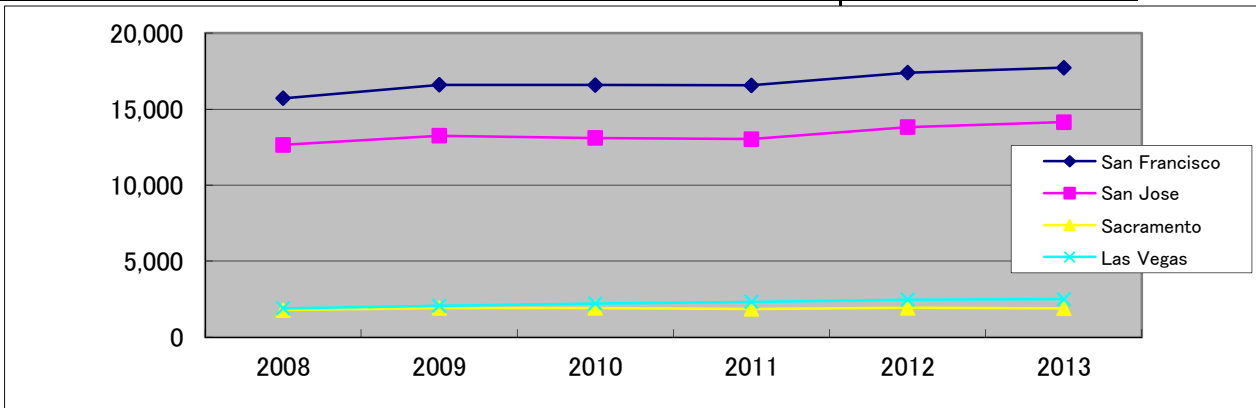
2. By State

	2008	2009	2010	2011	2012	2013
Central & N. California	34,965	36,905	36,525	36,407	38,164	38,891
Nevada	2,440	2,631	2,760	2,857	3,044	3,083



3. By City

	2008	2009	2010	2011	2012	2013
San Francisco	15,708	16,599	16,587	16,565	17,394	17,727
San Jose	12,644	13,249	13,100	13,023	13,812	14,146
Sacramento	1,778	1,916	1,915	1,852	1,920	1,896
Las Vegas	1,892	2,065	2,207	2,316	2,463	2,489



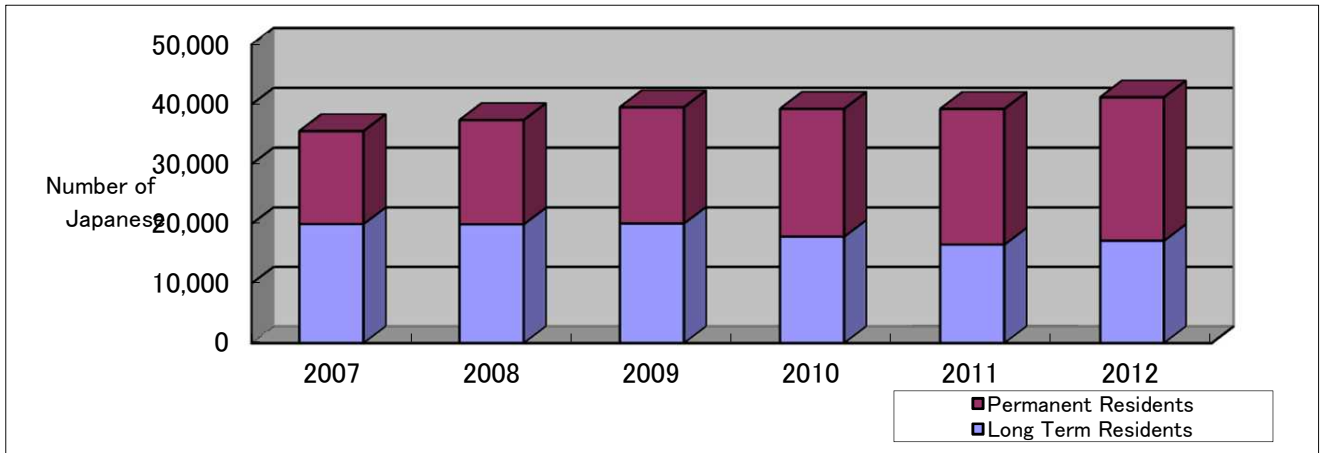
※Number of Japanese by city includes the Japanese population in the surrounding area.

※These statistics are estimated according to the number of notification of residence forms received.

Numbers of Japanese Nationals (Northern and Central California and Nevada)

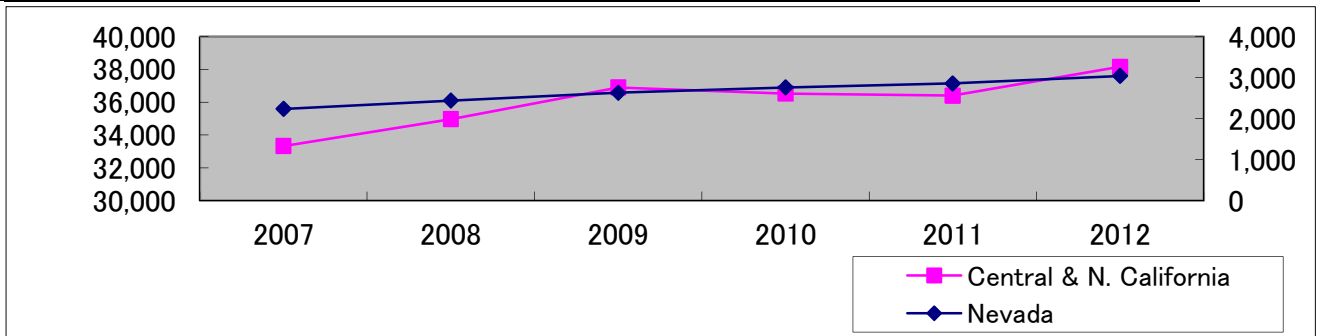
1. Total Number of Japanese Residents

	2007	2008	2009	2010	2011	2012
Long Term Residents	19,996	19,946	20,084	17,874	16,543	17,183
Permanent Residents	15,563	17,459	19,452	21,411	22,721	24,025
Total Number	35,559	37,405	39,536	39,285	39,264	41,208



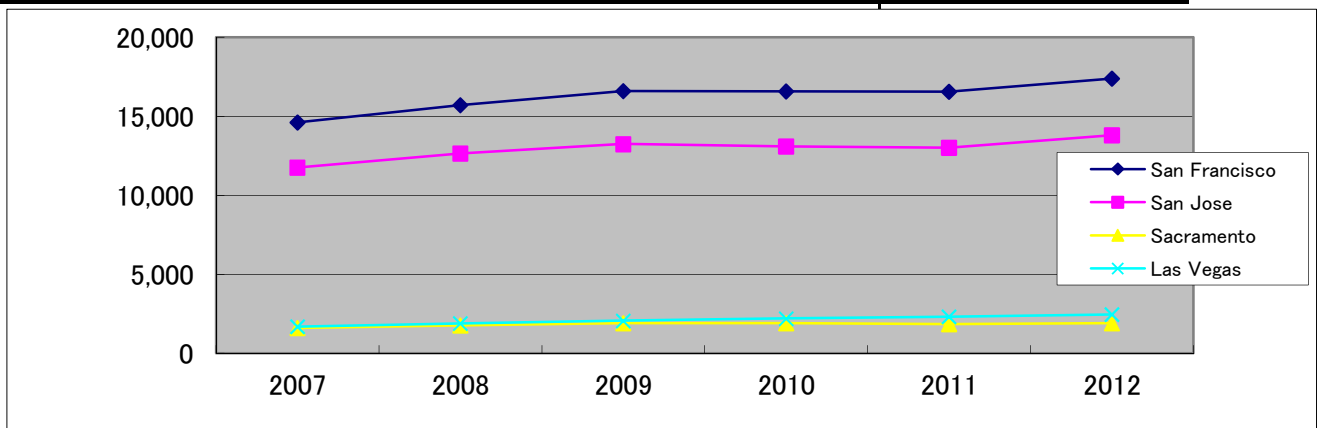
2. By State

	2007	2008	2009	2010	2011	2012
Central & N. California	33,323	34,965	36,905	36,525	36,407	38,164
Nevada	2,236	2,440	2,631	2,760	2,857	3,044



3. By City

	2007	2008	2009	2010	2011	2012
San Francisco	14,607	15,708	16,599	16,587	16,565	17,394
San Jose	11,765	12,644	13,249	13,100	13,023	13,812
Sacramento	1,617	1,778	1,916	1,915	1,852	1,920
Las Vegas	1,690	1,892	2,065	2,207	2,316	2,463



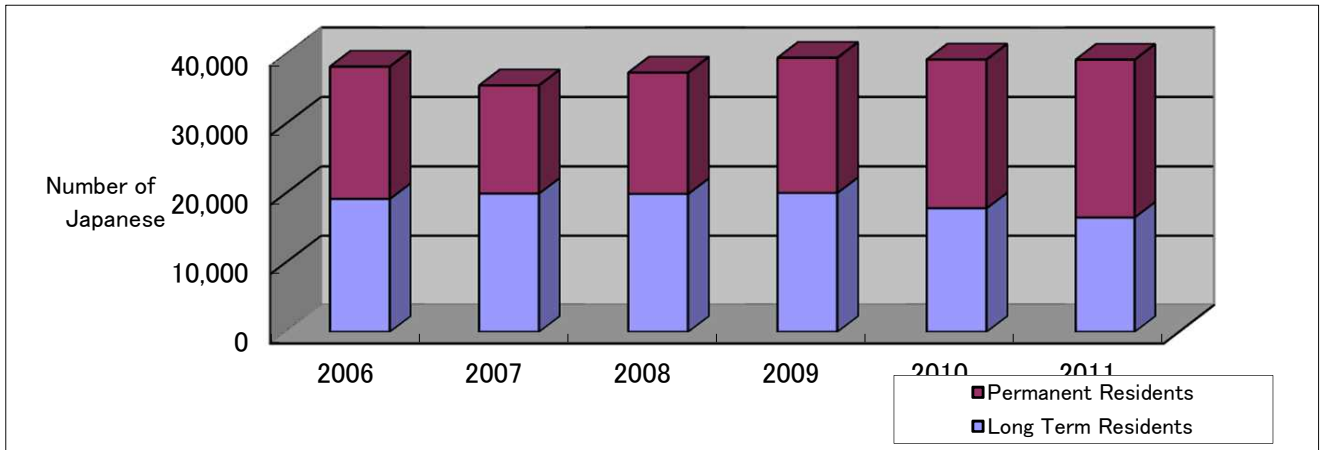
※Number of Japanese by city includes the Japanese population in the surrounding area.

※These statistics are estimated according to the number of notification of residence forms received.

Numbers of Japanese Nationals (Northern and Central California and Nevada)

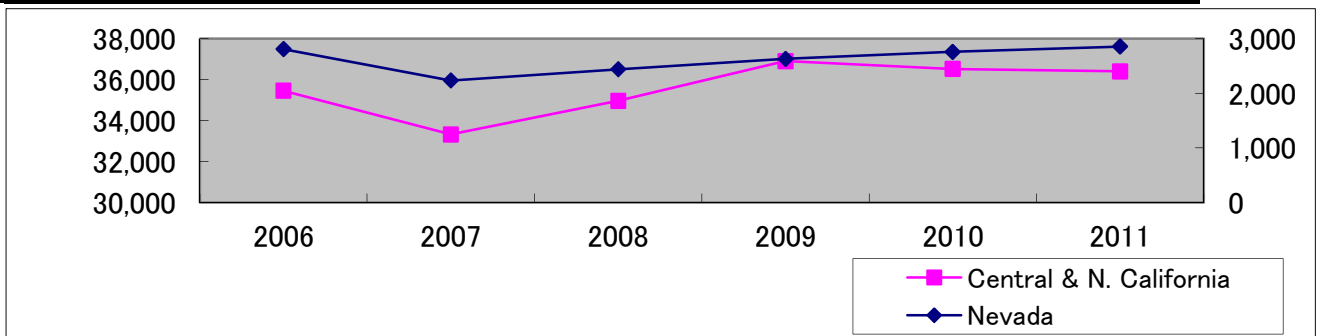
1. Total Number of Japanese Residents

	2006	2007	2008	2009	2010	2011
Long Term Residents	19,221	19,996	19,946	20,084	17,874	16,543
Permanent Residents	19,045	15,563	17,459	19,452	21,411	22,721
Total Number	38,266	35,559	37,405	39,536	39,285	39,264



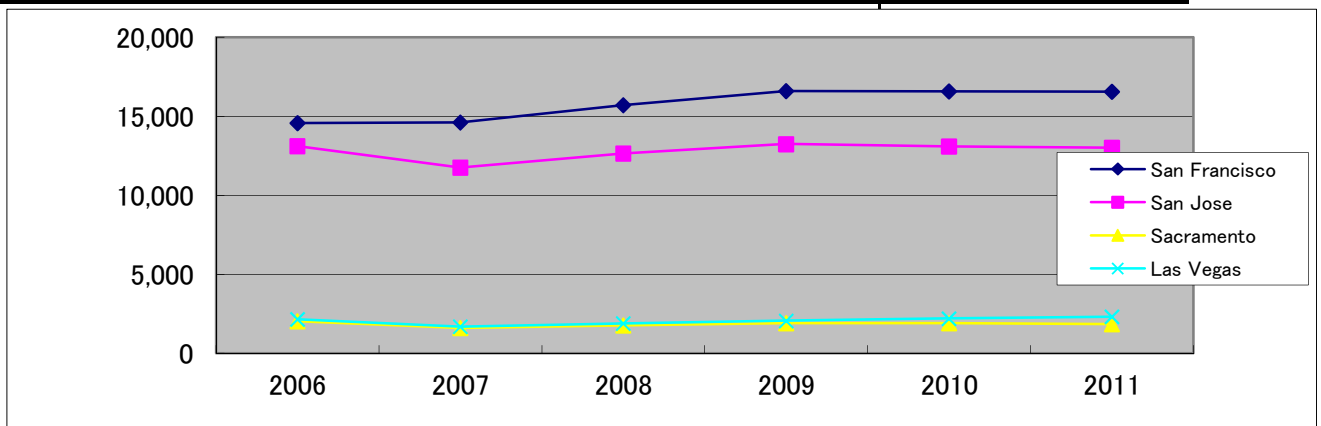
2. By State

	2006	2007	2008	2009	2010	2011
Central & N. California	35,458	33,323	34,965	36,905	36,525	36,407
Nevada	2,808	2,236	2,440	2,631	2,760	2,857



3. By City

	2006	2007	2008	2009	2010	2011
San Francisco	14,575	14,607	15,708	16,599	16,587	16,565
San Jose	13,124	11,765	12,644	13,249	13,100	13,023
Sacramento	2,041	1,617	1,778	1,916	1,915	1,852
Las Vegas	2,157	1,690	1,892	2,065	2,207	2,316



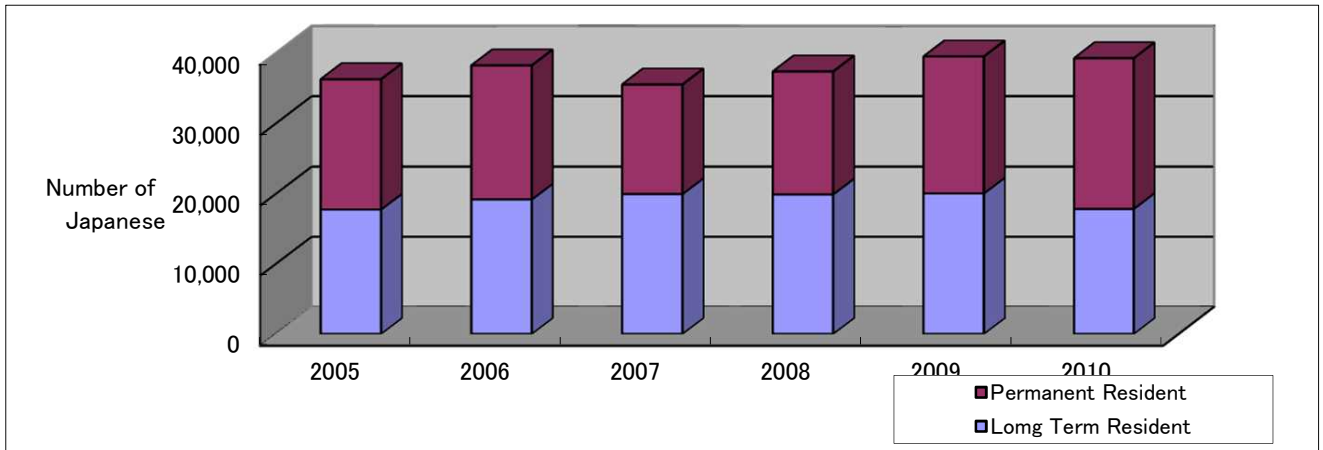
※Number of Japanese by city includes the Japanese population in the surrounding area.

※These statistics are estimated according to the number of notification of residence forms received.

The Numbers of Japanese Nationals (Northern and Central California and Nevada)

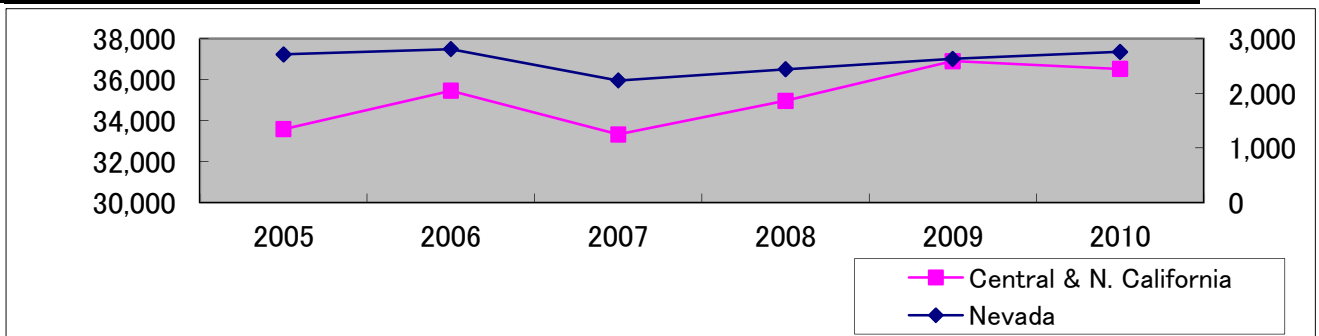
1. Total Number of Japanese Nationals

	2005	2006	2007	2008	2009	2010
Long Term Resident	17,784	19,221	19,996	19,946	20,084	17,874
Permanent Resident	18,509	19,045	15,563	17,459	19,452	21,411
Total Number	36,293	38,266	35,559	37,405	39,536	39,285



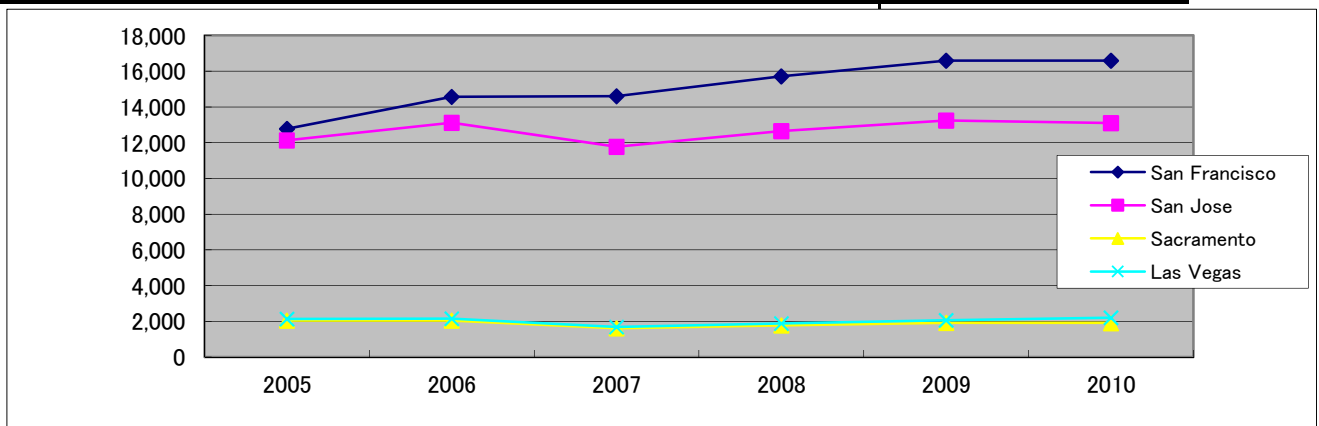
2. By State

	2005	2006	2007	2008	2009	2010
Central & N. California	33,580	35,458	33,323	34,965	36,905	36,525
Nevada	2,713	2,808	2,236	2,440	2,631	2,760



3. By City

	2005	2006	2007	2008	2009	2010
San Francisco	12,781	14,575	14,607	15,708	16,599	16,587
San Jose	12,136	13,124	11,765	12,644	13,249	13,100
Sacramento	2,049	2,041	1,617	1,778	1,916	1,915
Las Vegas	2,136	2,157	1,690	1,892	2,065	2,207



※Number of Japanese by city includes the Japanese population in the surrounding area

※These statistics are estimated according to the number of notification of residence forms received.